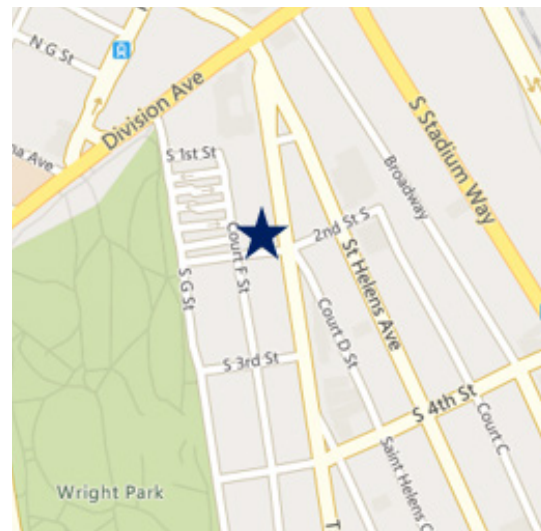




BUILDING AN
EXCEPTIONAL
FUTURE,
TOGETHER.

FOR LEASE

SHORT-TERM OFFICE SPACE FOR LEASE
124 TACOMA AVE S, TACOMA



FEATURES

- Short-Term Office Space Available, +/- 24 month term
- Located on Corner of Tacoma Ave S and 2nd Street in the Stadium District
- Adjacent to Wright Park
- Possible demising options available

CURRENT AVAILABILITY

SUITE	SIZE	AVAILABLE
B	11,601	Now

CONTACT

Emily Frankland

Leasing Broker

t 253.858.3636

efrankland@therushcompanies.com

Kayla Dyer

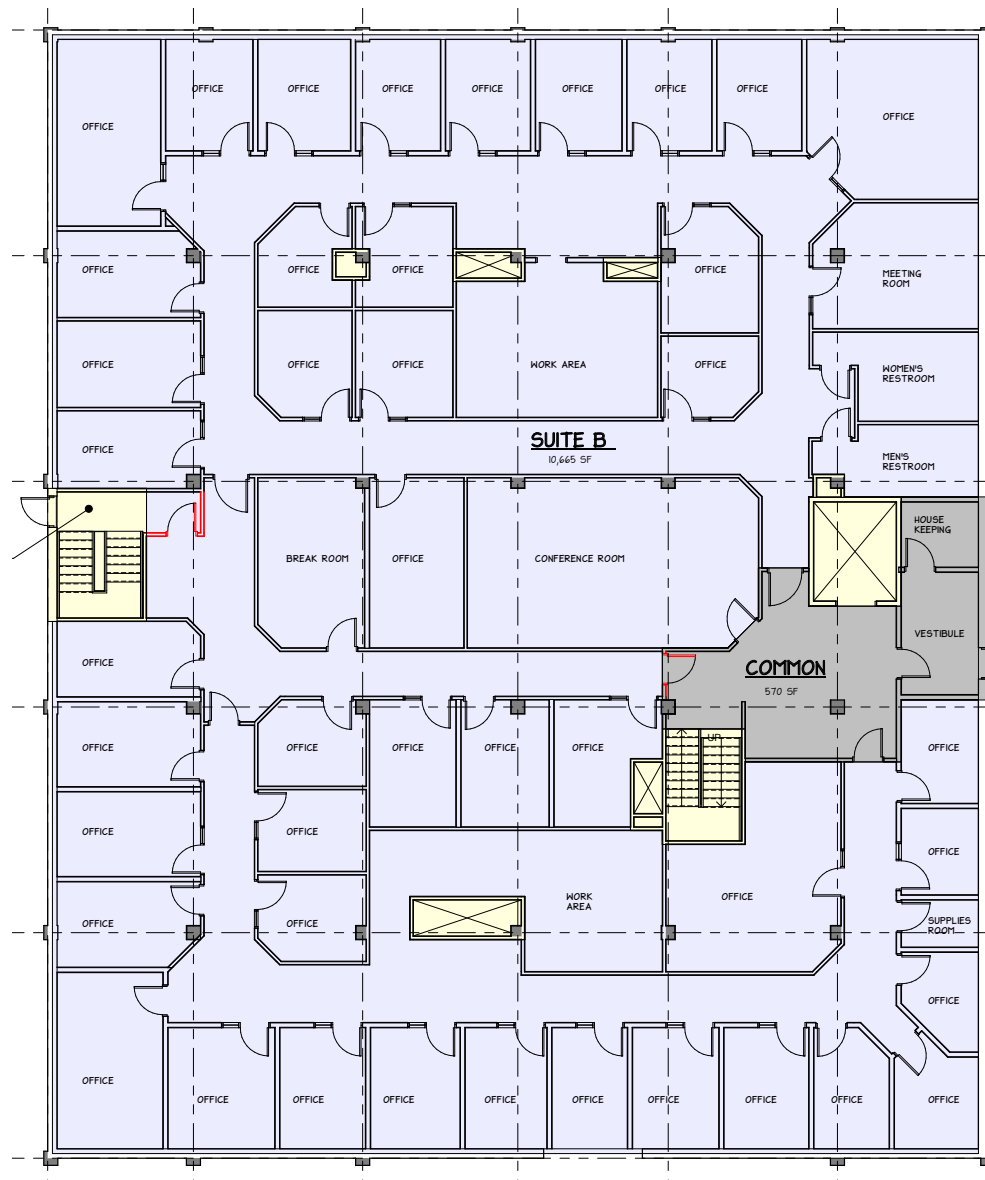
Associate Broker

t 253.858.3636

kdyer@therushcompanies.com

SHORT-TERM OFFICE SPACE FOR LEASE

124 TACOMA AVE S, TACOMA



Suite B - 11,601 Rentable Square Feet