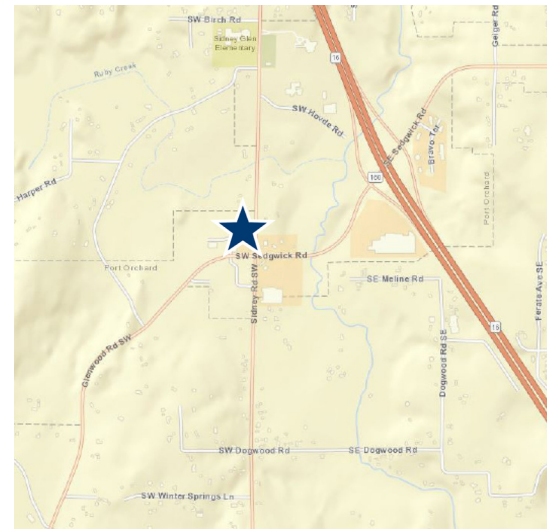


SEDGWICK LANDING RETAIL 3 423 SOUTHWEST SEDGWICK ROAD, PORT ORCHARD



FEATURES

- Retail Space Available
- Located on Corner of Busy Sedgwick and Sidney Intersection
- Daily Traffic Count > 15,000 on Sedgwick
- Conveniently located off HWY 16
- Opportunity for Exterior Building Signage
- Professionally Managed by Rush Properties

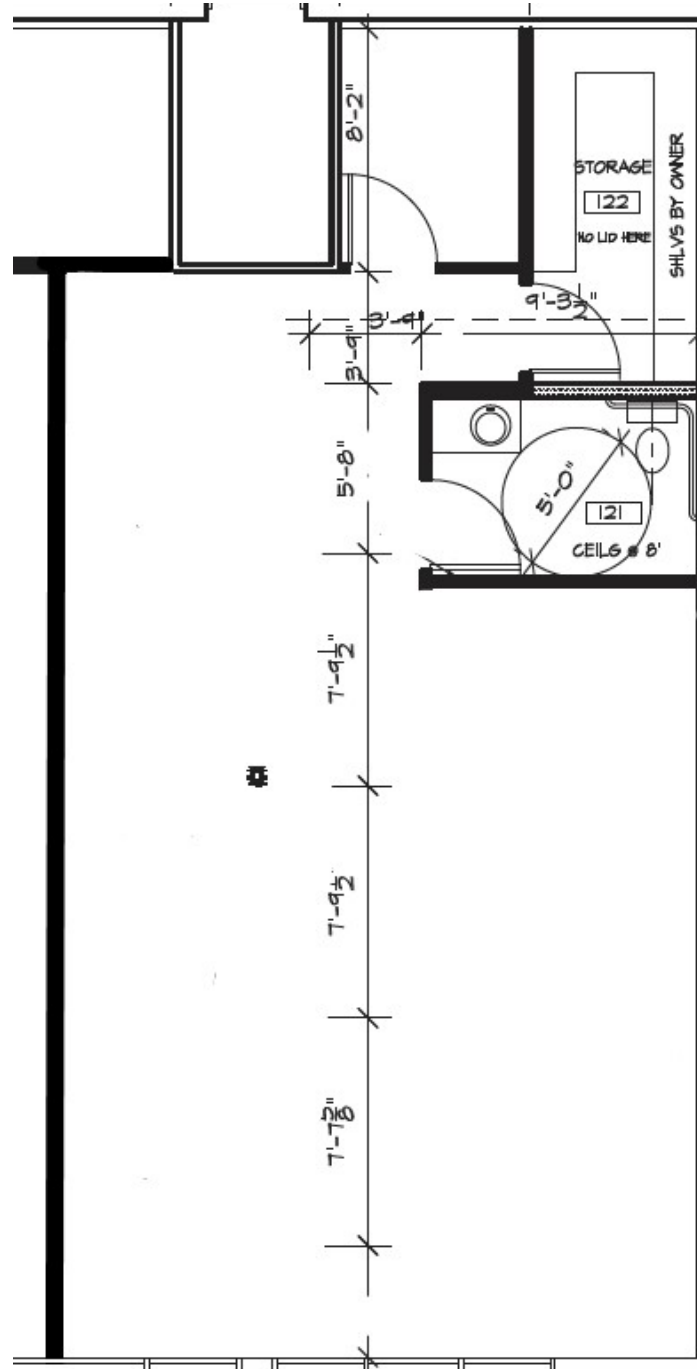
CURRENT AVAILABILITY

SUITE	SIZE	AVAILABLE
111	792	Now

CONTACT

Kayla Dyer
Associate Broker
t 253.858.3636
kdyer@therushcompanies.com

SEDGWICK LANDING RETAIL 3 423 SOUTHWEST SEDGWICK ROAD, PORT ORCHARD



Suite 111 - 792 Rentable Square Feet