

PUYALLUP PROFESSIONAL PLAZA BUILDING 1
8114-8116 112TH ST. CT. E., PUYALLUP



FEATURES

- Office Space Available
- Recently Updated Finishes
- Abundant Parking Available
- Convenient South Hill Location
- Easy Access from Canyon Road
- Professionally Managed by Rush Properties

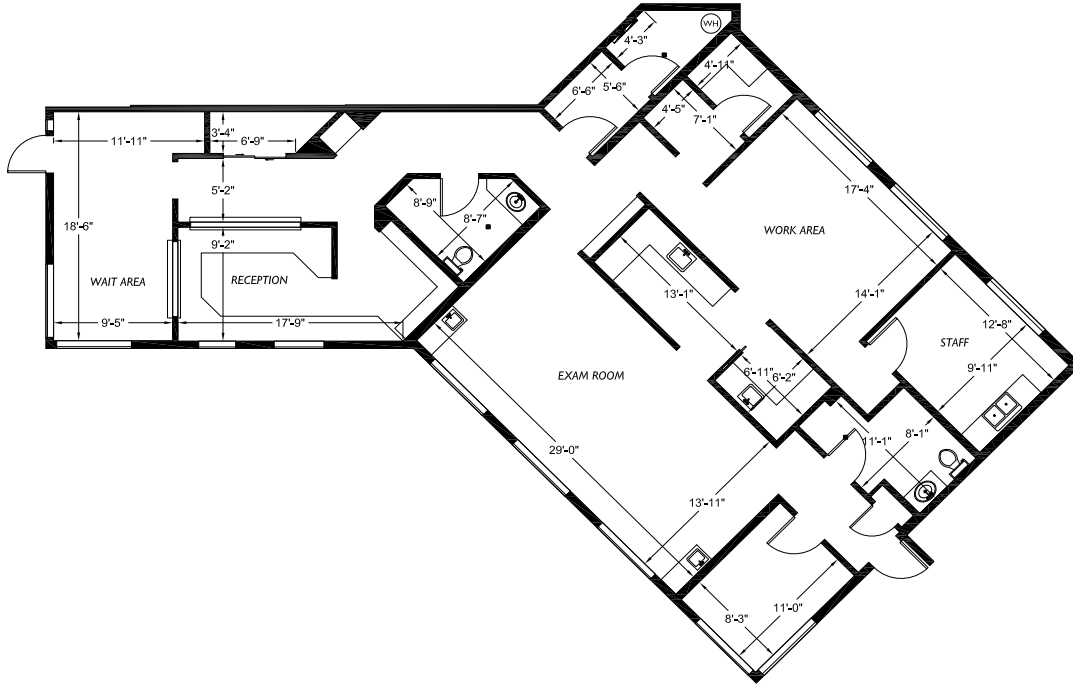
CURRENT AVAILABILITY

SUITE	SIZE	AVAILABLE
8114A	2,110	Now
8116A	2,741	Q1 2019

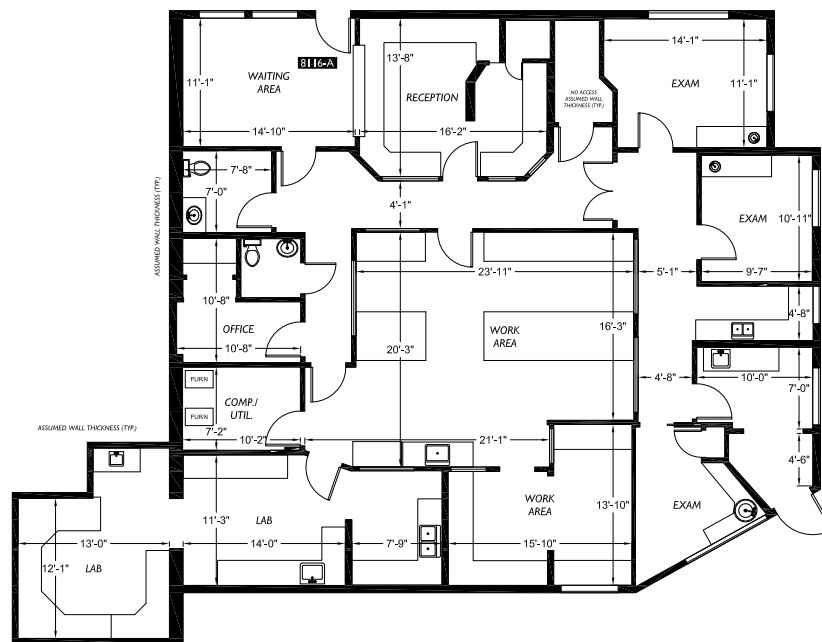
CONTACT

Karen Fairall
Director of Brokerage Services
t 253.858.3636
f 253.858.3188
kfairall@therushcompanies.com

PUYALLUP PROFESSIONAL PLAZA BUILDING 1
8114-8116 112TH ST. CT. E., PUYALLUP



Suite 8114A - 2,110 Rentable Square Feet



Suite 8116A - 2,741 Rentable Square Feet